

A Call for a 11/11/11 at 11:11:11 Meditation in Kuala Lumpur, Malaysia

According to the 'Numbers by Jasmine' website – '11 is a magical number. It is highly charged, excited, attuned and creative, empathetic (to the point of being psychic) and a fantastic dreamer. With this number on your side you have the fire ignited and the overwhelming urge to "be", to "feel", and to "live". It is a little chaotic and erratic, which can get you into trouble if you are not self-disciplined. Anything is possible at this time.'

11 in binary numbers is 3. In decimal three is the symbol of the Trinity and Trinity exists everywhere:

- ◆ Truth, Love and Wisdom;
- ◆ Heart, Mind and Soul;
- ◆ Upper and Lower Realms as well as the Inner Earth;
- ◆ Father, Mother and Child;
- ◆ Father, Son and Holy Ghost;
- ◆ The Soul, Human Body and the Spirit;
- ◆ Mind, Body and Spirit;
- ◆ Divine Masculine, Feminine and Inner Child;
- ◆ Actions, Emotions and Thoughts;
- ◆ Ego, Mind and Subconscious;
- ◆ Gold, Frankincense and Myrrh;
- ◆ Past, Present and Future;
- ◆ Above, Below and Now;



11/11/11; 11:11:11 Meditation

Michelle will co-create a guided, channelled meditation which will be totally spontaneous. The downloads of energy that will come through are to be totally suited to our collective energy on the day, as well as the 11/11/11 – 11:11:11 gateway opening.

We will download and integrate the energies of THE ONE as we are ALL ONE. This will facilitate us moving even more fully into Heart-centred consciousness [leaving behind 'Head-based or Ego-focus'].

This gateway will be the beginning of true Unity or Trinity Consciousness for everyone. It has been likened to a celestial womb, which is full of possibilities for us all.

The meditation requires **all** who participate to be willing to fully step into the Unknown and truly trust that what will come through will be for their Highest and Best good for all at this time in their lives (this includes Michelle herself!)

Quote
"Leap
and the net will appear"
Goethe

Location

Unit 17-3A, 3rd Mile Square 151, Jalan Kelang Lama, Batu 3 ½ 58100

Commencing

10am until 1pm. Energy Exchange - MYR 111

What to bring

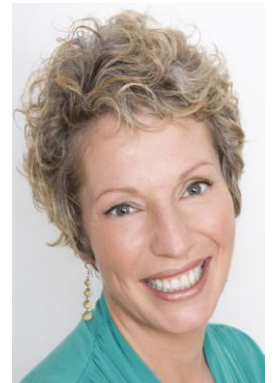
- ◆ Pen & paper (if you wish to make notes)
- ◆ 1 bottle of filtered water, snacks (if you feel you might get hungry)
- ◆ An intention for yourself, your journey and/or the workshop
- ◆ A blanket, yoga mat, comfortable clothes
- ◆ A willingness and openness to share, to change and to try something new



Michelle A. Hardwick

For over 10 years, Michelle has travelled the world helping individuals and groups release barriers to who they truly are using a combination of potent tools: Emotional Release; Neurolinguistic Programming [NLP]; Hypnosis; Spiritual Teachings; Channelled Guidance as well as Past Life Regression.

Michelle (pictured right) is developing new practical workshops utilizing profound, innovative methods for initiation and ascension. These are new programmes designed for 2012 and beyond to help individuals and groups begin; strengthen and maintain a powerful connection with:



- ◆ their Truth
- ◆ their Self
- ◆ their Soul, and
- ◆ Source/All There Is

Michelle's mission is empowerment, growth, connection and evolution - not only for herself, but also for those who consult and train with her. If you are ready to make fundamental changes in your life, Michelle is here to support you.

Email Michelle – info@michellehardwick.com for more details go to www.michellehardwick.com

Bookings

Please call Nallini 011 1281 2968 or send email to nallini@monikawyss.com to reserve your place!

*Are you ready to join us and
take a leap of faith into the unknown?*